

STORM & SANITARY MANHOLE INVERTS

SSMH 30091 RIM=1009.67 INV=1006.24 6" VCP NE INV=1000.65 10" VCP E INV=1006.77 10" VCP S INV=1000.59 10" VCP W	CB 30813 RIM=1019.26 INV=1016.21 12" VCP BOTTOM OF ELBOW TRAP TOP OF WATER=1016.26 BOTTOM=1014.76	CB 40861 RIM=1014.00 INV=1009.40 18" RCP N INV=1011.00 4" PVC E INV=1009.40 15" RCP S TOP OF WATER=1009.80 BOTTOM=1008.50
STMH 30092 RIM=1009.55 INV=1002.19 48" RCP W INV=1002.23 12" VCP NE INV=1002.25 48" RCP E INV=1003.90 24" RCP S INV=1003.67 12" VCP SE	CB 30814 RIM=1019.29 INV=1015.61 8" PVC NW	CB 41063 RIM=1018.45 INV=1016.37 4" PVC SW
STMH 30105 RIM=1009.58 INLET=1008.93 INV=1004.53 12" VCP SW TOP OF WATER=1005.43 BOTTOM=1002.38	CB 30815 RIM=1018.61 INV=1015.36 8" PVC N	CB 41070 RIM=1018.64 INV=1016.56 4" PVC SW
STMH 30160 RIM=1009.44 GUT=1008.81 INV=1003.86 12" VCP NW TOP OF WATER=1004.94 BOTTOM=1002.44	CB 30816 RIM=1019.61 INV=1017.03 BOTTOM OF TRAP OPENING W TOP OF WATER=1017.11 BOTTOM=1016.61	CB 41116 RIM=1014.13 INV=1011.18 12" RCP SE
STMH 30327 RIM=1009.32 INV=1004.67 24" RCP N INV=1004.92 18" RCP SE INV=1004.76 18" RCP S INV=1004.97 21" VCP SW	STMH 40061 RIM=1016.38 INLET=1015.72 INV=1010.81 12" VCP SE TOP OF WATER=1012.23 BOTTOM=1009.18	CB 41117 RIM=1015.96 INV=1011.08 12" RCP N INV=1011.21 12" RCP E INV=1011.18 12" RCP NW
SSMH 30328 RIM=1009.36 INV=1006.97 10" VCP N INV=1007.17 10" VCP SE	SSMH 40077 RIM=1016.63 INV=1007.30 10" VCP E INV=1007.27 10" VCP W	CB 41122 RIM=1016.11 INV=1012.41 12" RCP W INV=1012.66 8" PVC NE INV=1012.48 10" RCP E INV=1012.44 12" RCP SE
CB 30409 RIM=1008.98 INV=1005.23 18" VCP N INV=1005.28 15" VCP S	STMH 40078 RIM=1016.52 INV=1008.83 48" RCP W INV=1008.89 48" RCP E INV=1009.04 12" VCP NE INV=1011.52 15" VCP SE	CB 41123 RIM=1015.61 INV=1013.13 8" PVC SW
CB 30472 RIM=1008.08 INV=1005.13 18" VCP NE INV=1005.03 18" VCP S TOP OF WATER=1005.23 BOTTOM=1003.48	STMH 40260 RIM=1016.65 INV=1011.11 12" VCP NW TOP OF WATER=1012.75 BOTTOM=1008.95	CB 41124 RIM=1015.09 INV=1012.89 10" RCP E INV=1012.87 10" RCP W TOP OF WATER=1012.99 BOTTOM=1012.59
CB 30524 RIM=1007.68 INV=1005.46 15" VCP N INV=1005.58 15" PVC S BOTTOM=1005.18	CB 40293 RIM=1019.14 INV=1015.89 8" VCP NW TOP OF WATER=1016.29	CB 41125 RIM=1014.79 INV=1012.76 12" RCP SW TOP OF WATER=1013.09 BOTTOM=1012.29
CB 30550 RIM=1000.49 TOP OF DIRT=999.39 BOTTOM=997.99 -STRUCTURE IS FULL OF DEBRIS	STMH 40294 RIM=1019.16 INV=1013.66 10" VCP SW INV=1013.61 12" VCP N INV=1012.41 4" VERT VCP-1014.51 TO TOP INV=1015.71 8" VCP SE INV=1014.36 6" VCP S INV=1014.66 8" VCP SW	CB 41126 RIM=1013.11 INV=1010.20 12" HDPE NW TOP OF WATER=1010.46 BOTTOM=1009.71
CB 30624 RIM=1010.14 INV=1006.34 15" RCP N INV=1006.34 15" RCP S	CB 40295 RIM=1018.84 INV=1015.24 8" VCP NE TOP OF WATER=1015.64 BOTTOM=1014.84	CB 41127 RIM=1014.20 INV=1009.76 12" HDPE NW TOP OF WATER=1009.76 BOTTOM=1009.00
CB 30730 RIM=1009.26 INV=1005.93 15" VCP N INV=1005.95 12" VCP W INV=1006.02 12" VCP S	CB 40356 RIM=1013.75 INV=1011.80 6" PVC S TOP OF WATER=1011.75 BOTTOM=1011.15	CB 41128 RIM=1014.65 INV=1007.12 18" HDPE SE INV=1007.10 18" HDPE NW
CB 30733 RIM=1010.06 INV=1006.56 12" VCP N INV=1006.86 12" VCP W	CB 40431 RIM=1012.90 INV=1009.90 8" PVC S TOP OF WATER=1010.90 BOTTOM=1009.90	CB 41129 RIM=1014.70 INV=1011.47 12" RCP NE TOP OF WATER=1011.52 BOTTOM=1010.20
CB 30734 RIM=1010.84 INV=1001.84 8" PVC NE INV=1001.04 12" PVC W	CB 40461 RIM=1011.61 INV=1009.71 6" VCP NW INV=1009.71 6" VCP SE INV=1008.26 8" VCP S BOTTOM=1007.61	CB 41130 RIM=1014.71 INV=1012.62 12" RCP NE INV=1012.48 12" RCP NW TOP OF WATER=1012.61 BOTTOM=1012.06
CB 30735 RIM=1014.40 INV=1005.22 8" PVC INSIDE A 24" RCP NE INV=1004.65 8" PVC SW	STMH 40700 RIM=1014.04 INV=1009.09 18" RCP NW INV=1009.09 18" RCP S	CB 41131 RIM=1014.73 INV=1009.96 12" HDPE SE INV=1009.96 12" HDPE SE TOP OF WATER=1009.96 BOTTOM=1009.23
CB 30738 RIM=1012.44 INV=1012.44 24" RCP NE INV=1006.49 18" HDPE SE INV=1005.89 24" RCP SW	CB 40706 RIM=1013.71 INV=1009.06 18" RCP N INV=1011.11 4" PVC E INV=1009.06 18" RCP S	TRENCH DRAIN 41132 RIM=1003.22 -FULL OF WATER -NO PIPES VISIBLE BOTTOM=1002.32
	CB 40852 RIM=1013.68 INV=1009.93 15" RCP N INV=1010.71 8" PVC E INV=1010.05 12" VCP S	CB 41134 RIM=1002.69 -FULL OF WATER/DEBRIS -NO PIPES VISIBLE BOTTOM=998.04
		CB 41137 RIM=1013.76 INV=1010.46 12" RCP W INV=1010.86 4" VCP NE INV=1010.86 4" VCP S

SURVEYOR'S NOTES

- HORIZONTAL DATUM IS OHIO STATE PLANE, NORTH ZONE NAD83(2011) GRID NORTH.
- VERTICAL DATUM IS NAVD 1988.
- PERTINENT RECORDS USED ARE AS SHOWN HEREON.
- THIS MAP AND THE SURVEY ON WHICH IT IS BASED HAVE BEEN PREPARED WITHOUT THE BENEFIT OF A TITLE REPORT AND ARE NOT INTENDED TO REFLECT ALL EASEMENTS, ENCUMBRANCES, OR OTHER CIRCUMSTANCES AFFECTING THE TITLE TO THE PROPERTY SHOWN HEREON.
- THE UTILITIES, SEWERS AND THEIR LOCATIONS SHOWN HEREON ARE DERIVED FROM A COMBINATION OF FIELD SURVEYING OF VISIBLE UTILITY STRUCTURES, AVAILABLE PLANS AND A LEVEL C SUBSURFACE UTILITY INVESTIGATION. ACTUAL LOCATION OF UTILITIES MAY VARY FROM THE DEPICTED LOCATIONS. OTHER UNKNOWN UTILITIES MAY EXIST AND NECESSARY PRECAUTIONS SHOULD BE FOLLOWED WHEN EXCAVATING. ADDITIONAL INVESTIGATION SUCH AS VIDEOTAPING PIPE RUNS, NON-DESTRUCTIVE EXPOSURE OF UTILITIES MAY DETERMINE THE UNKNOWN UTILITY INFORMATION. CONTACT OHIO UTILITIES PROTECTION SERVICE (OUPS) AT 1-800-362-2764 PRIOR TO EXCAVATION.
- AS OF APRIL 26, 2022, THE FOLLOWING COMPANIES HAVE RESPONDED TO THE INITIAL OUPS REQUEST B204700279, B204700282, B204700295 & B204700296 FOR UTILITY PLANS: AT&T, CEI FIRST ENERGY, DOMINION EAST OHIO GAS, NEORS, CITY OF CLEVELAND WATER POLLUTION CONTROL, CITY OF CLEVELAND WATER & TIME WARNER CABLE. THE FOLLOWING COMPANIES HAVE NOT RESPONDED: CITY OF CLEVELAND DIVISION OF TRAFFIC ENGINEERING & CLEVELAND PUBLIC POWER.

BENCH MARKS

- BM 1
LL IN MUELLER ON TOP FLANGE OF FIRE HYDRANT ON SOUTH SIDE OF HARVARD IN FRONT OF JFK HIGH SCHOOL.
ELEV=1013.47
- BM 2
RAILROAD SPIKE IN POWER POLE #E12-41-3 IN EAST PARKING LOT OF JFK HIGH SCHOOL.
ELEV=1015.91

UTILITY REFERENCES

- FIELD LOCATED UTILITY MARKINGS.
- CEI FIRST ENERGY UTILITY PLANS.
- DOMINION EAST OHIO GAS PLANS.
- CITY OF CLEVELAND WATER PLANS.
- JOHN F. KENNEDY HIGH SCHOOL PLANS.

ABBREVIATIONS

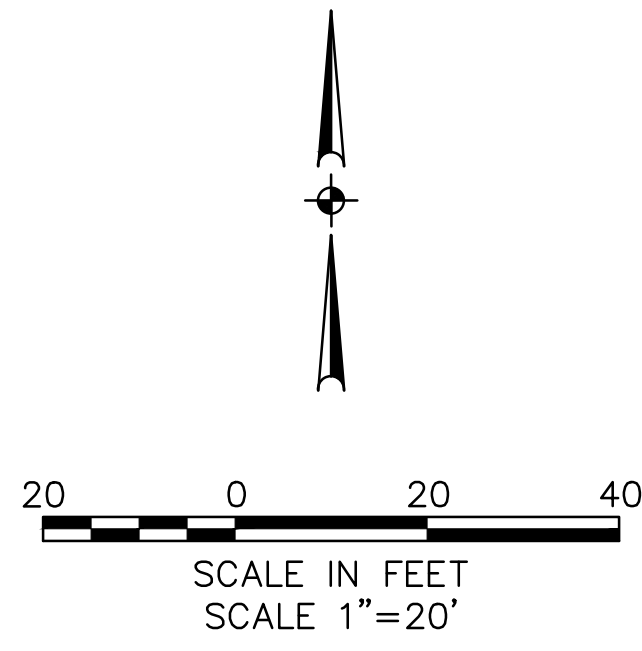
ALUM	ALUMINUM
ASPH	ASPHALT
C.I.	CAST IRON
C.L.F.	CHAIN LINK FENCE
CONC	CONCRETE
ELEC	ELECTRIC
FF	FINISHED FLOOR
HDPE	HIGH DENSITY POLYETHYLENE
INV	INVERT
IP	INTERMEDIATE PRESSURE
LP	LOW PRESSURE
MD	MEDIUM
P	PAGE
PI	PLASTIC
PVC	POLYVINYL CHLORIDE
RCP	REINFORCED CONCRETE PIPE
S/L	SUBLOT
STL	STEEL
V	VOLUME
VCP	VITRIFIED CLAY PIPE
VERT	VERTICAL

LEGEND

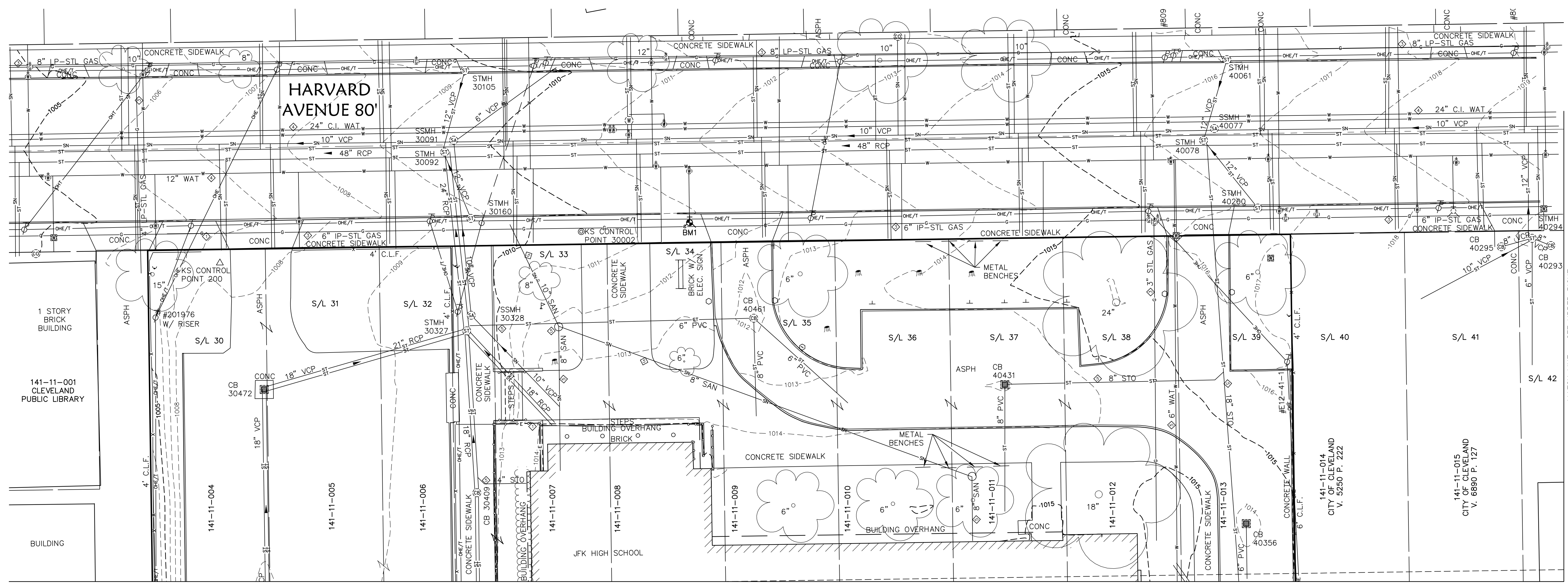
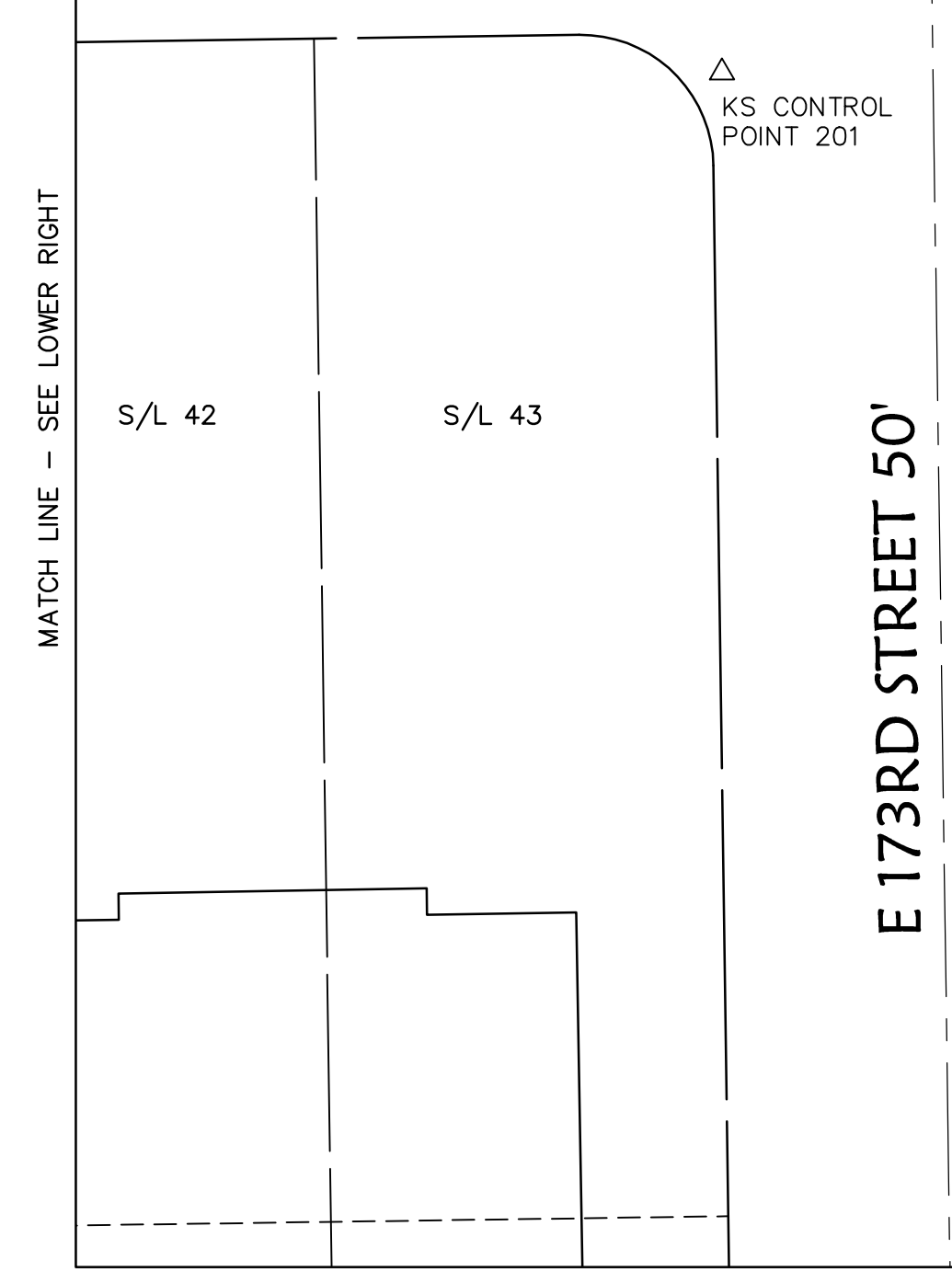
△	KS CONTROL POINT	⊠	ELECTRIC METER
●	BENCH MARK	⊗	ELECTRIC HAND HOLE
◇	UTILITY IDENTIFICATION	⊞	UTILITY BOX
⊞	CATCH BASIN	⊞	AIR CONDITIONER
⊞	CATCH BASIN	⊞	LIGHT POLE
⊞	CLEAN OUT	⊞	GUY ABCHOR
⊞	STORM MANHOLE	⊞	TELEPHONE POWER POLE
⊞	SANITARY MANHOLE	⊞	FLAG
⊞	WATER VALVE	⊞	POWER POLE
⊞	FIRE HYDRANT	⊞	POWER LIGHT POLE
⊞	WATER MANHOLE	⊞	SIGN
⊞	WATER METER	⊞	BOLLARD
⊞	GAS VALVE	⊞	STUMP
⊞	GAS METER	⊞	BUSH/SAPLING
⊞	ELECTRIC BOX	⊞	TREE
—x—	FENCE LINE	—	PROPERTY LINE
—	REINFORCED CONCRETE PIPE	—	CENTER LINE
—	RIGHT OF WAY	—	WATER LINE
—	GAS LINE	—	UNDERGROUND ELECTRIC LINE
—	UNDERGROUND ELECTRIC LINE	—	UNDERGROUND FIBER OPTIC LINE
—	UNDERGROUND FIBER OPTIC LINE	—	STORM LINE
—	STORM LINE	—	SANITARY LINE
—	SANITARY LINE	—	OVERHEAD ELEC/TELEPHONE
—	OVERHEAD ELEC/TELEPHONE	—	OVERHEAD ELECTRIC
—	OVERHEAD ELECTRIC	—	RAILING
—	RAILING	—	GUARD RAIL
—	GUARD RAIL	—	WOODS/SHRUB LINE
—	WOODS/SHRUB LINE		

CONTROL POINT TABLE				
POINT #	NORTHING	EASTING	ELEVATION	DESCRIPTION
200	650992.23	2225839.68	1007.52	CNPT IPINS
201	651001.68	2226443.70	1021.35	CNPT MAGS
202	650612.67	2225875.58	1009.68	CNPT MAGS
203	650303.37	2225907.06	1012.26	CNPT IPINS
204	650459.08	2226246.48	1016.02	CNPT MAGS
206	650753.33	2226239.08	1014.59	CNPT MAGS
207	650732.85	2226491.80	1020.78	CNPT IPINS
30002	651004.64	2225982.42	1010.45	BDSK 895

DATE	4-26-22
DESCRIPTION	
REVISIONS DATE: 4-26-22 DRAWN BY: KAR CHD BY: KAR DIM. NAME: 201 LWF, High School PATH: CIVIL_3D_2019 F.B.: 1035_1036	
KS Associates, Inc. 260 Burns Road, Suite 100 Elyria, OH 44035 P 440 365 4730 F 440 365 4790 www.ksassociates.com	
BOARD OF EDUCATION OF THE CLEVELAND CITY SCHOOL DISTRICT JOHN F. KENNEDY HIGH SCHOOL TOPOGRAPHIC SURVEY CITY OF CLEVELAND, COUNTY OF CUYAHOCA STATE OF OHIO	
SHEET	2
	OF
	7
JOB NO.	21281



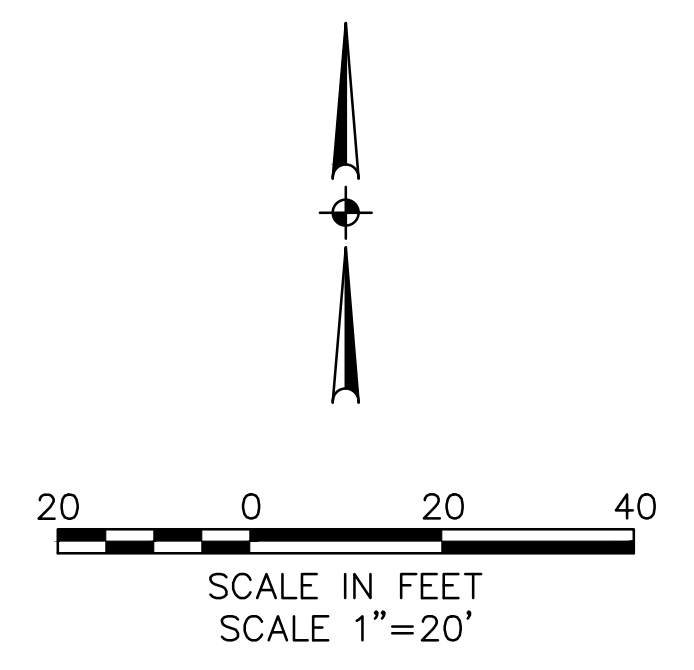
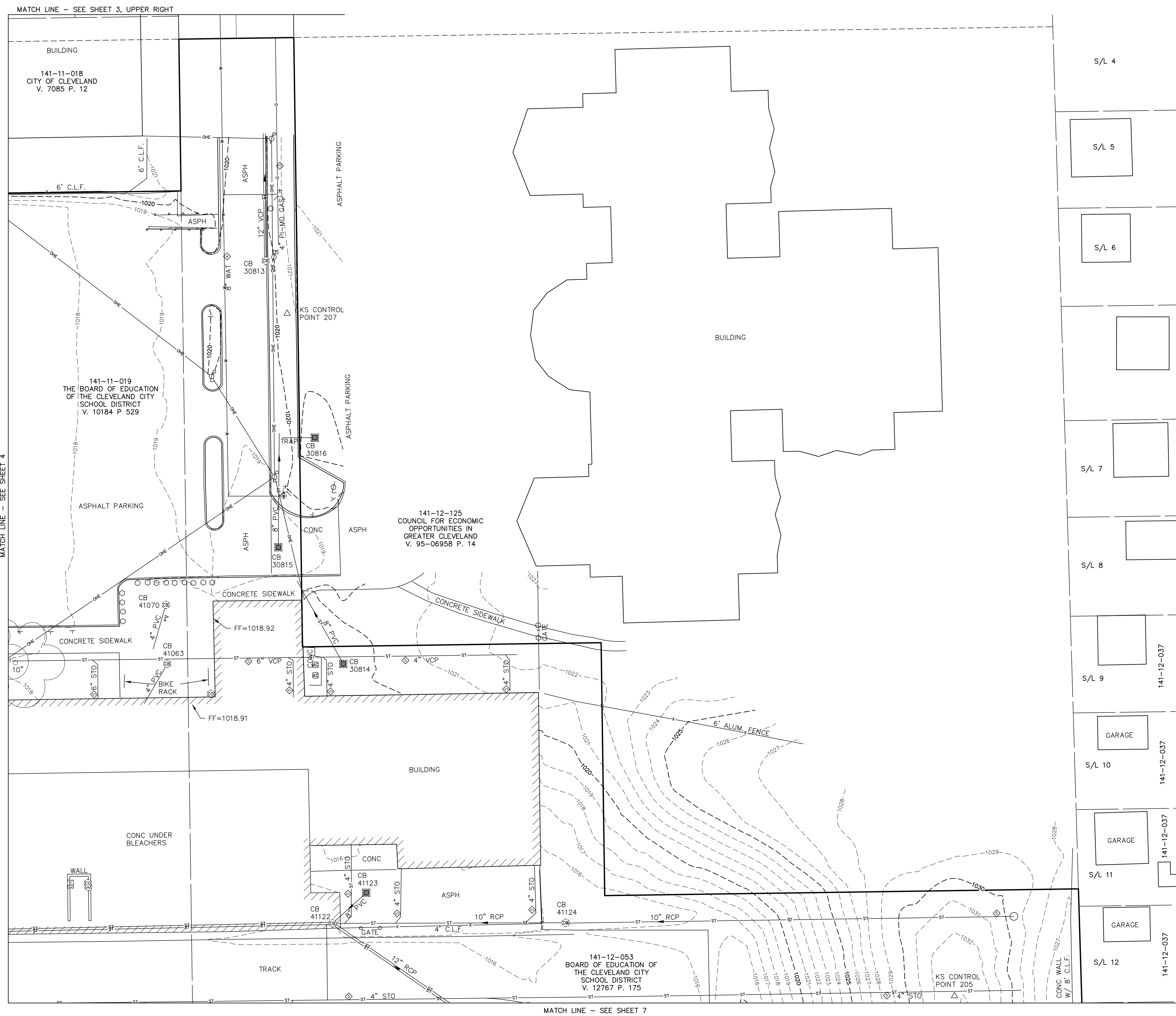
HARVARD AVENUE 80'



DATE:	4-26-22	DESCRIPTION:	
DRAWN BY:	KAR	DATE:	
CHKD BY:		REVISIONS:	
DWG. NAME:	201976_High_School	DATE:	
PATH:	CIVIL_3D_2019	DATE:	
F.B.:	10355_1036	DATE:	
KS Associates, Inc. 260 Burns Road, Suite 100 Elyria, OH 44035 P 440 365 4730 F 440 365 4790 www.kssociates.com		KS ASSOCIATES	
BOARD OF EDUCATION OF THE CLEVELAND CITY SCHOOL DISTRICT JOHN F. KENNEDY HIGH SCHOOL TOPOGRAPHIC SURVEY CITY OF CLEVELAND, COUNTY OF CUYAHOCA STATE OF OHIO			
SHEET		3	
OF		7	
JOB NO.		21281	

R:\2\10002\281\CIVIL_3D_2019\CURRENT DRAWINGS\BASE DRAWINGS\201976_High_School_basew.dwg, Plotted: Apr 26, 2022, 9:45am

R:\2\1002\281\CIVIL 3D\2019\CURRENT DRAWINGS\BASE DRAWINGS\DWG21281_JFK High School_base.dwg, Plotted: Apr 26, 2022, 9:45am



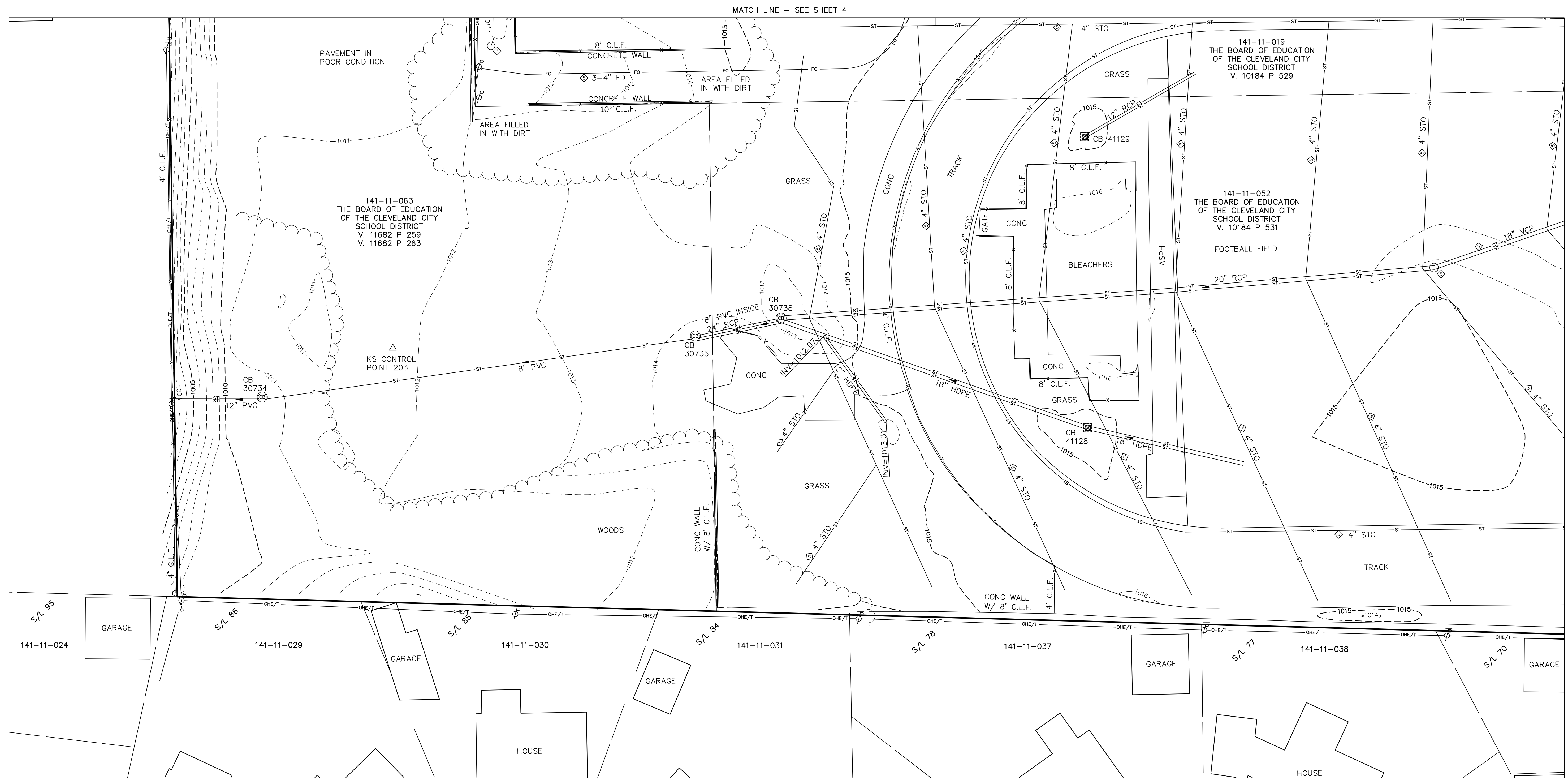
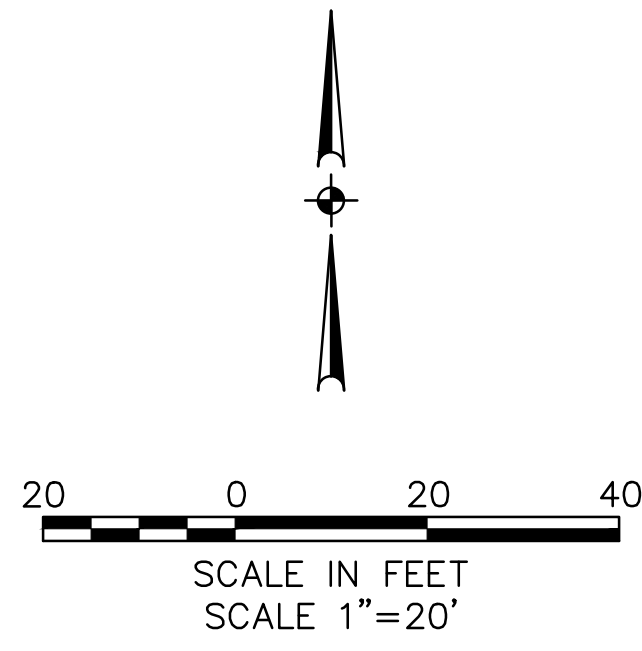
MATCH LINE - SEE SHEET 3, UPPER RIGHT

MATCH LINE - SEE SHEET 4

MATCH LINE - SEE SHEET 7

BY	
DESCRIPTION	
DATE	
REVISIONS	
DATE: 4-26-22	KAR
DRAWN BY:	KAR
CHKD BY:	
DWG. NAME:	21281 JFK High School
PATH:	CIVIL_3D_2019
F.B.:	1035_1036
<p>KS ASSOCIATES, Inc. 260 Burns Road, Suite 100 Elyria, OH 44035 P 440 365 4730 F 440 365 4790 www.ksassociates.com</p>	
<p>KS ASSOCIATES</p>	
<p>BOARD OF EDUCATION OF THE CLEVELAND CITY SCHOOL DISTRICT JOHN F. KENNEDY HIGH SCHOOL TOPOGRAPHIC SURVEY CITY OF CLEVELAND, COUNTY OF CUYAHOCA STATE OF OHIO</p>	
SHEET	5
OF	7
JOB NO.	21281

- S/L 4
- S/L 5
- S/L 6
- S/L 7
- S/L 8
- S/L 9 141-12-037
- S/L 10 141-12-037 GARAGE
- S/L 11 141-12-037 GARAGE
- S/L 12 141-12-037 GARAGE



R:\2\10002\1281\CIVIL 3D 2019\CURRENT DRAWINGS\BASE DRAWINGS\DWG\21281_JFK_High_School_base.dwg, Plotted: Apr 26, 2022, 9:45am

DATE: 4-26-22		DESCRIPTION
DRAWN BY: KAR		
CHKD BY: DMC, NAME/DOB/REL, High School		
PATH: CIVIL_3D_2019		
F.B.: 10355_1036		
REVISIONS		
<p style="text-align: center;">MATCH LINE - SEE SHEET 4</p> <p style="text-align: center;">MATCH LINE - SEE SHEET 7</p>		
<p>KS ASSOCIATES, Inc. 260 Burns Road, Suite 100 Elyria, OH 44035 P 440 365 4730 F 440 365 4790 www.ksassociates.com</p>		
<p>BOARD OF EDUCATION OF THE CLEVELAND CITY SCHOOL DISTRICT JOHN F. KENNEDY HIGH SCHOOL TOPOGRAPHIC SURVEY CITY OF CLEVELAND, COUNTY OF CUYAHOCA STATE OF OHIO</p>		
SHEET 6		OF 7
JOB NO. 21281		

